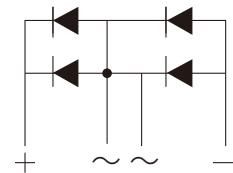


## FEATURES

- | Glass Passivated Junction
- | Surge Overload Ratings to 60 Amperes Peak
- | Reliable Low Cost Construction Utilizing Molded Plastic
- | Technique Results In Expensive Product
- | Mounting Position: Any



WOB



Schematic Symbol

## APPROVALS

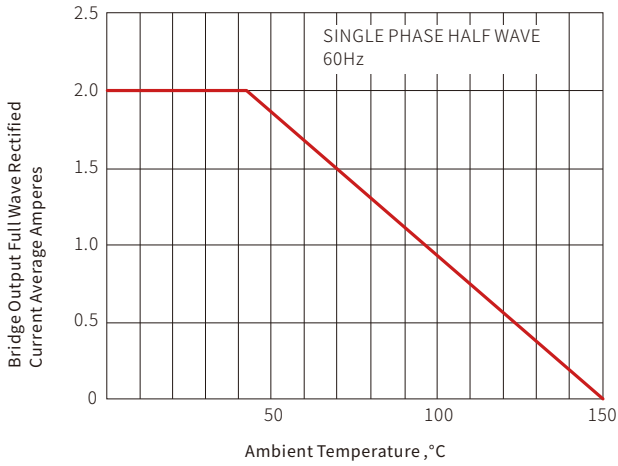
- RoHS** | Compliance with 2011/65/EU
- HF** | Compliance with IEC61249-2-21:2003

## MAXIMUM RATINGS AND CHARACTERISTICS (T<sub>A</sub>=25°C)

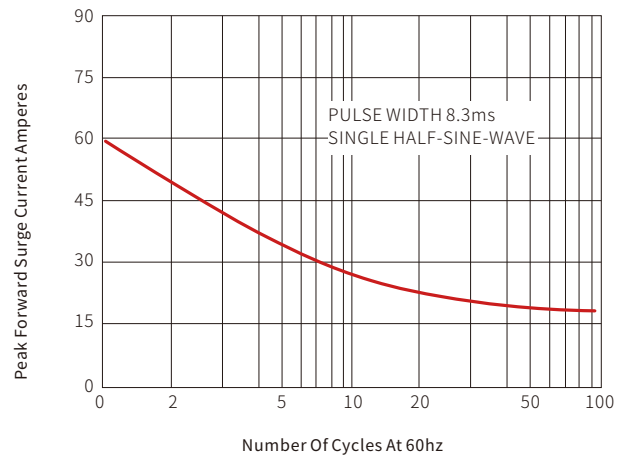
Parameter	Symbol	2W 005G	2W 01G	2W 02G	2W 04G	2W 06G	2W 08G	2W 10G	Unit
Marking		2W005	2W01	2W02	2W04	2W06	2W08	2W10	
Maximum Repetitive Peak Reverse Voltage	V <sub>RRM</sub>	50	100	200	400	600	800	1000	V
Maximum RMS Voltage	V <sub>RMS</sub>	35	70	140	280	420	560	700	
Maximum DC Blocking Voltage	V <sub>DC</sub>	50	100	200	400	600	800	1000	
Maximum Average Forward Rectified Output Current at T <sub>a</sub> =25°C	I <sub>F(AV)</sub>	2.0							A
Peak Forward Surge Current ,8.3ms Single Half Sine-Wave Superimposed On Rated Load	I <sub>FSM</sub>	60							
I <sup>2</sup> t Rating For Fusing (T<8.3ms)	I <sup>2</sup> t	14.9							
Maximum Forward Voltage Drop Per Element At 1.0A Peak	V <sub>F</sub>	1.1							V
Maximum DC Reverse Current At Rated DC Blocking Voltage	I <sub>R</sub>	T <sub>J</sub> =25°C							μA
		T <sub>J</sub> =100°C							mA
Operating Junction And Storage Temperature Range	T <sub>J</sub> ,T <sub>STG</sub>	-55 to +150							°C

# CHARACTERISTIC CURVES

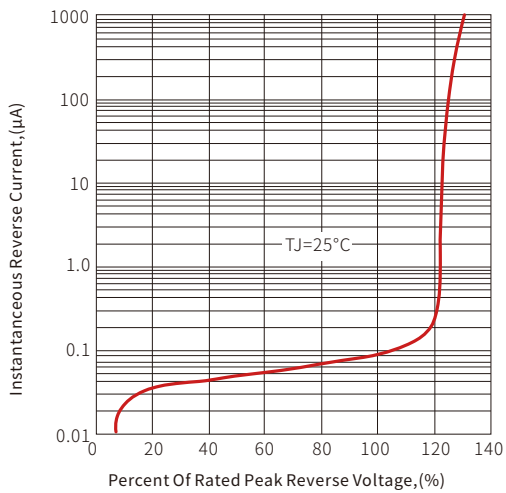
**Fig. 1- Derating Curve For Output Rectified Current**



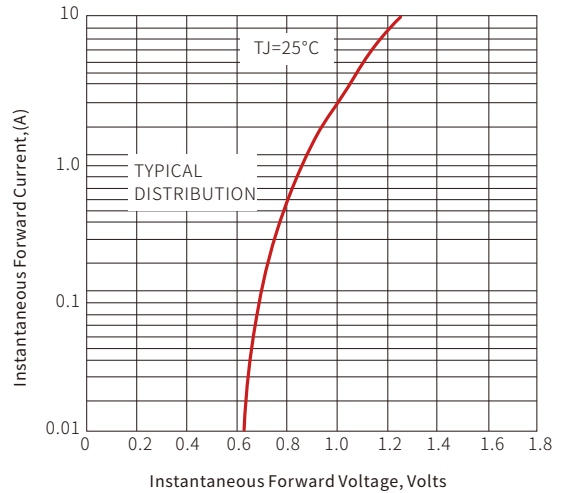
**Fig. 2- Maximum Non-repetitive Sunrge Current**



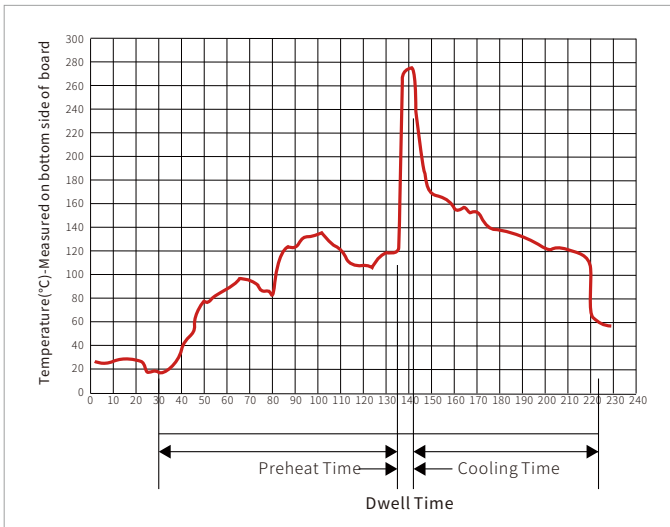
**Fig. 3- Typical Forward Voltage**



**Fig. 4- Typical Reverse Characteristics**

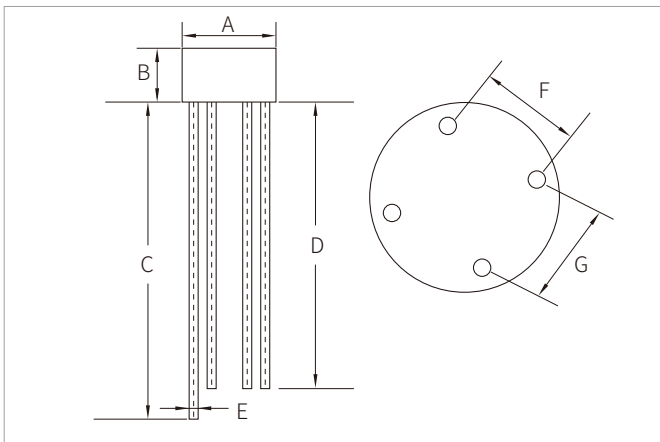


## WAVE SOLDERING



Wave Parameter		Lead-free assembly
Pre Heat	Temperature Min	100°C
	Temperature Max	150°C
	Time(min to max)	60 – 180 secs
Solder pot Temperature		280°C Max
Solder Dwell Time		2-5 seconds

## WOB PACKAGE INFORMATION



Ref.	Millimeters		Inches	
	Min.	Max.	Min.	Max.
A	8.60	9.10	0.340	0.360
B	5.00	5.50	0.197	0.217
C	30.00MIN		1.180MIN	
D	27.00MIN		1.060MIN	
E	0.28	0.32	0.720	0.820
F	4.60	5.60	0.180	0.220
G	4.60	5.60	0.180	0.220

## ORDERING INFORMATION

Part Number	Component Package	Per Box (pcs)	Description
2W005G-2W10G	WOB	1000PCS	Box

**Headquarters**

No.3387 Shendu Road  
Pujiang I&E Park  
Minhang Shanghai China  
201000

**Hotline**

400-021-5756

**Web**

<https://www.semiware.com>

**Sales Center**

Tel: 86-21-3463-7458  
Email: [sales18@semiware.com](mailto:sales18@semiware.com)

**Customer Service**

Tel: 86-21-5484-1001  
Email: [sales17@semiware.com](mailto:sales17@semiware.com)

**Technical Support**

Tel: 86-21-3463-7654  
Email: [fae01@semiware.com](mailto:fae01@semiware.com)

**Complaint & Suggestions**

Tel: 86-21-3463-7172  
Ext: 8868  
Email: [cs03@semiware.com](mailto:cs03@semiware.com)

**By QR Code**

Website



Wechat

To find your local partner within Semiware' s global website: [www.semiware.com](http://www.semiware.com)

© 2022 Semiware Semiconductor Inc.

The content of this document has been carefully checked and understood. However, neither Semiware nor its subsidiaries assume any liability whatsoever for any errors or inaccuracies of this document and the consequences thereof. Published specifications are subject to change without notice. Product suitability for any area of application must ultimately be determined by the customer. In all cases, products must never be operated outside their published specifications. Semiware does not guarantee the availability of all published products. This disclaimer shall be governed by substantive Chinese law and resulting disputes shall be settled by the courts at the place of business of Semiware. Latest publications and a complete disclaimer can be downloaded from the Semiware website. All trademarks recognized.