

FEATURES

- | Super fast speed switching speed
- | Low forward voltage drop
- | Low leakage current
- | High forward surge capability
- | High reliability



DO-15

MECHANICAL DATA

- | Case: Molded plastic, DO-15
- | Polarity: Color band denotes cathode end
- | Mounting position: Any

APPROVALS

RoHS	Compliance with 2011/65/EU
HF	Compliance with IEC61249-2-21:2003

MAXIMUM RATINGS AND CHARACTERISTICS (T_A=25°C)

Parameter	Symbol	SF21	SF22	SF23	SF24	SF25	SF26	SF28	Unit
Marking		SF21	SF22	SF23	SF24	SF25	SF26	SF28	
Maximum Recurrent Peak Reverse Voltage	V _{RRM}	50	100	150	200	300	400	600	V
Maximum RMS Voltage	V _{RMS}	35	70	105	140	210	280	420	
Maximum DC Blocking Voltage	V _{DC}	50	100	150	200	300	400	600	
Maximum Average Forward Rectified Current at T _A =55°C	I _{F(AV)}	2.0							A
Peak Forward surge current 8.3ms single half-sine-wave superimposed on rate load (JEDEC method)	I _{FSM}	50							
Maximum Forward Voltage at 2.0A DC	V _F	0.95			1.25		1.70		V
Maximum DC reverse current at rated DC blocking voltage	I _R	5.0							μA
		100							
Typical Junction Capacitance (Note 3)	t _{rr}	35							nS
Typical Junction Capacitance (Note 1)	C _J	30			20				pF
Typical Thermal Resistance (Note 2)	R _{θJA}	50							°C/W
Operating Junction And Storage Temperature Range	T _J , T _{STG}	-55~+150							°C

Note:

1. Measured at 1MHz and applied reverse voltage of 4.0 VDC
2. Thermal Resistance From Junction to Ambient 0.375" (9.5mm) lead length P.C.B. Mounted
3. Reverse Recovery Test Condition I_F=0.5A, I_R=1A, I_{RR}=0.25A

CHARACTERISTIC CURVES

Fig.1 - Typical Forward Current Derating Curve

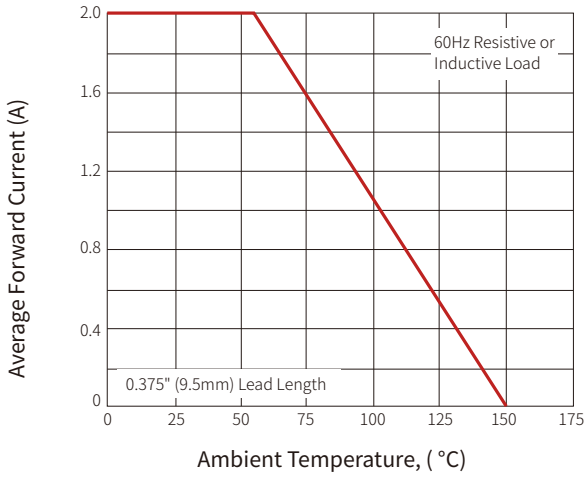


Fig.2 - Maximum Non-repetitive Peak Forward Surge Current

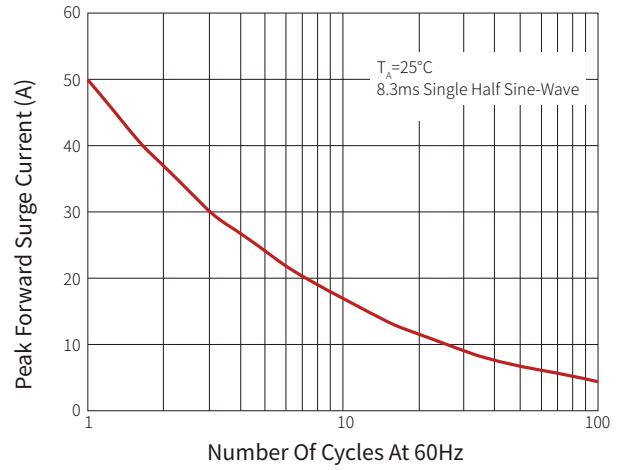


Fig.3 - Typical Instantaneous Forward Characteristics

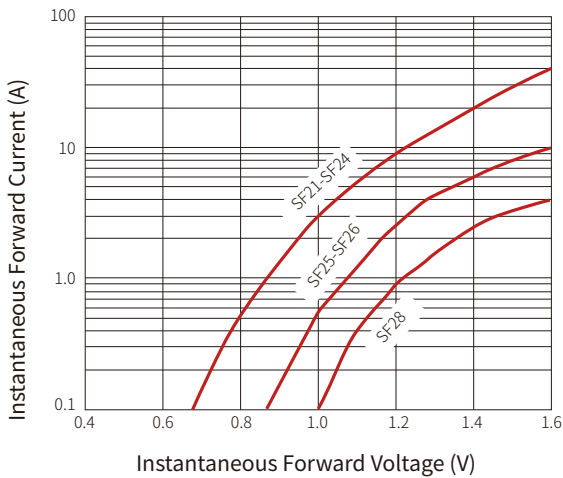


Fig.4 - Typical Reverse Characteristics

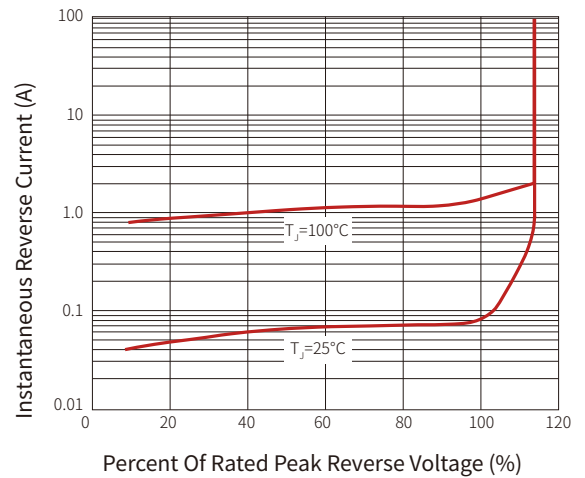


Fig.5 - Typical Junction Capacitance

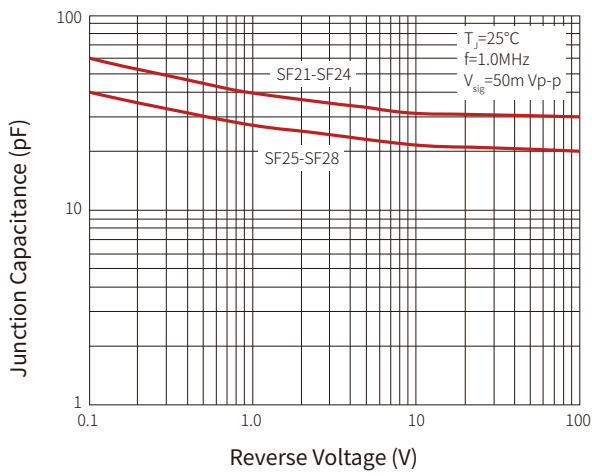
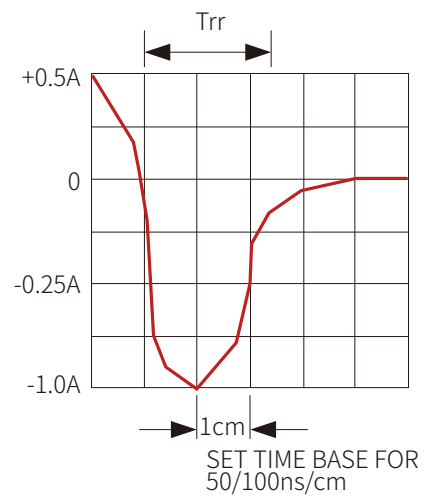
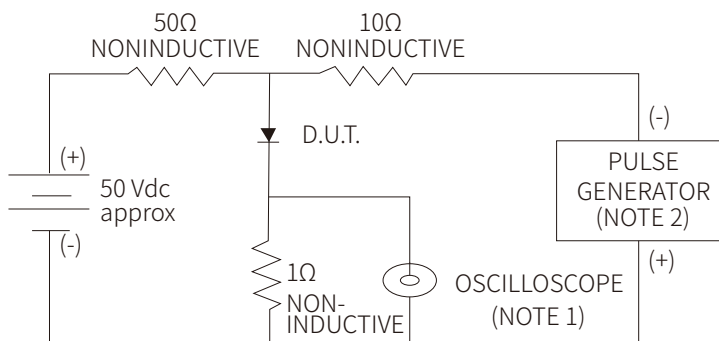
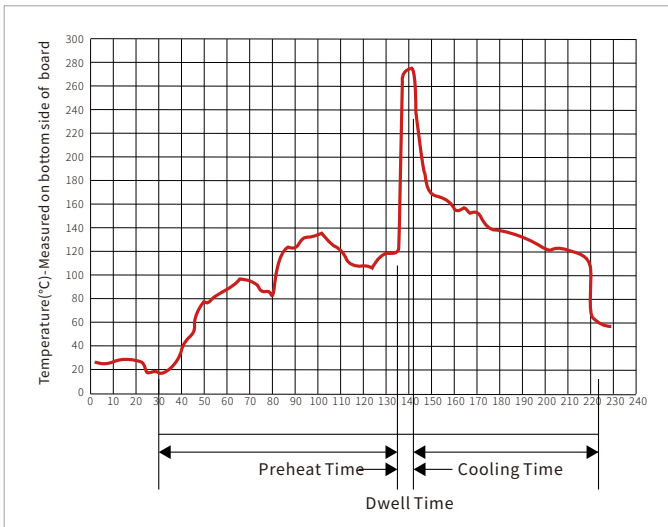


Fig.6 - Test Circuit Diagram And Forward Surge Current



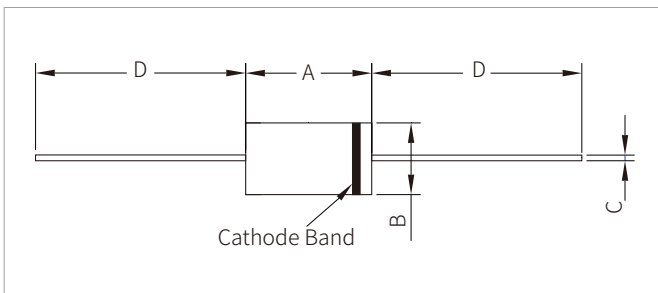
NOTES : 1. Rise Time = 7 ns max., Input Impedance = 1 megaohm, 22 pF
 2. Rise time = 10 ns max., Source Impedance = 50 ohms

WAVE SOLDERING



Wave Parameter		Lead-free assembly
Pre Heat	Temperature Min	100°C
	Temperature Max	150°C
	Time(min to max)	60 – 180 secs
Solder pot Temperature		280°C Max
Solder Dwell Time		2-5 seconds

DO-15 PACKAGE INFORMATION



Ref.	Millimeters		Inches	
	Min.	Max.	Min.	Max.
A	5.80	7.60	0.230	0.300
B	2.60	3.60	0.104	0.140
C	0.70	0.90	0.026	0.034
D	25.40	-	1.000	-

ORDERING INFORMATION

Part Number	Component Package	Per Carton	Description
SF21-SF28	DO-15	3000pcs	Box

Headquarters

No.3387 Shendu Road
Pujiang I&E Park
Minhang Shanghai China
201000

Hotline

400-021-5756

Web

<https://www.semiware.com>

Sales Center

Tel: 86-21-3463-7458
Email: sales18@semiware.com

Customer Service

Tel: 86-21-5484-1001
Email: sales17@semiware.com

Technical Support

Tel: 86-21-3463-7654
Email: fae01@semiware.com

Complaint & Suggestions

Tel: 86-21-3463-7172
Ext: 8868
Email: cs03@semiware.com

By QR Code

Website



Wechat

To find your local partner within Semiware's global website: www.semiware.com

© 2022 Semiware Semiconductor Inc.

The content of this document has been carefully checked and understood. However, neither Semiware nor its subsidiaries assume any liability whatsoever for any errors or inaccuracies of this document and the consequences thereof. Published specifications are subject to change without notice. Product suitability for any area of application must ultimately be determined by the customer. In all cases, products must never be operated outside their published specifications. Semiware does not guarantee the availability of all published products. This disclaimer shall be governed by substantive Chinese law and resulting disputes shall be settled by the courts at the place of business of Semiware. Latest publications and a complete disclaimer can be downloaded from the Semiware website. All trademarks recognized.